

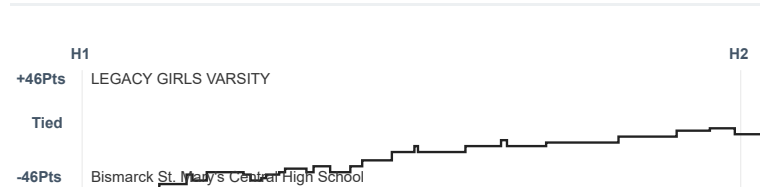
Box Score Report

LHS vs SMCHS - Jan 30, 2025 - W 81-37

Period Stats

Team	1	2	Final
LHS	40	41	81
SMCHS	16	21	37

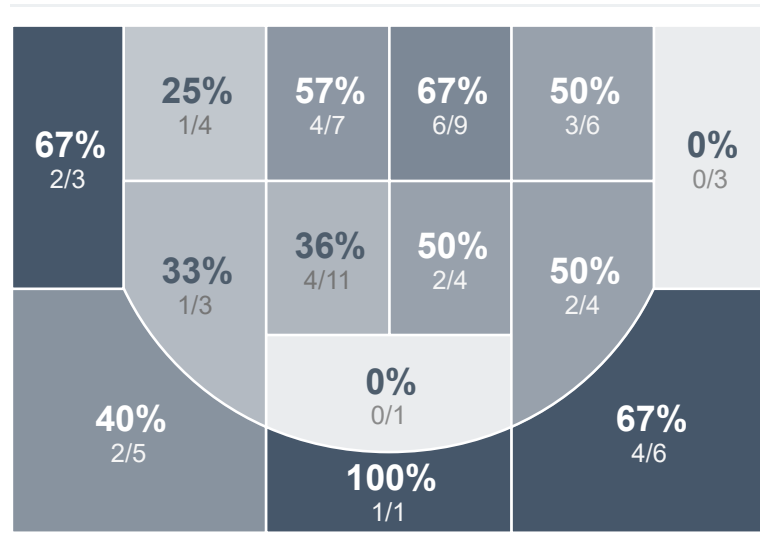
Run Graph



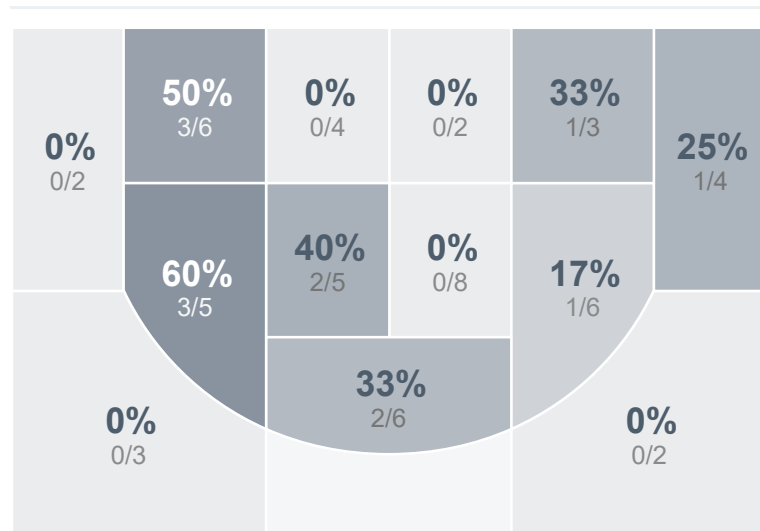
Team Stats

	LHS	SMCHS
Field Goal %	47.8%	23.2%
Effective Field Goal %	54.5%	24.1%
2FG Made/Attempted	23/49	12/45
2FG%	46.9%	26.7%
3FG Made/Attempted	9/18	1/11
3FG%	50.0%	9.1%
FT Made/Attempted	8/13	10/17
Free Throw Percentage	61.5%	58.8%
Points Per Possession	1.21	0.55
Transition Points	16	4
Points Off Turnovers	21	5
Second Chance Points	19	4
Points in the Paint	32	4
Offensive Rebounds	19	12
Defensive Rebounds	33	15
Assists	15	8
Deflections	18	11
Steals	9	8
Blocks	5	2
Turnovers	13	15
Personal Fouls	15	14
Charges Taken	1	0

LEGACY GIRLS VARSITY



Bismarck St. Mary's Central High School



LEGACY GIRLS VARSITY's Player Stats

Name	Pts	FG	3FG	FT	+/-	MINS	OREB	DREB	AST	DEFL	STL	BLK	TO	FOUL	CHG
Unknown Athlete	0	0/1	0/0	0/0	-	-	0	0	0	0	0	0	0	0	0
#13 Hailey Myrvik	0	0/1	0/0	0/0	0	1	0	0	0	0	0	0	0	0	0
#14 Whitney Welk	8	3/17	0/4	2/3	+26	25	0	1	4	1	1	0	2	0	1
#15 Alexis Selensky	3	1/1	1/1	0/0	+5	8	0	2	0	1	1	0	0	0	0
#21 Ava Lucas	0	0/0	0/0	0/0	+20	14	0	2	3	1	0	0	1	3	0
#22 Marissa Merkel	0	0/0	0/0	0/0	+3	3	0	0	1	0	0	0	0	1	0
#23 Marlee Falcon	23	8/13	6/9	1/2	+40	29	2	11	2	2	0	2	2	1	0
#24 Brooklyn Sailer	8	3/4	2/3	0/0	+8	15	0	1	0	1	1	0	1	1	0
#25 Sammy Watson	6	3/5	0/0	0/0	+35	21	6	1	1	3	4	0	4	2	0
#33 gracie watson	11	5/9	0/1	1/2	+23	19	3	4	1	4	1	0	1	4	0
#34 Brooklynn Felchle	18	7/10	0/0	4/6	+30	20	4	4	2	2	0	3	0	2	0
#35 Sadie Hollar	2	1/4	0/0	0/0	+30	18	2	4	1	2	1	0	2	1	0
#44 Unknown Athlete	2	1/2	0/0	0/0	0	1	1	2	0	1	0	0	0	0	0

Bismarck St. Mary's Central High School's Player Stats

Name	Pts	FG	3FG	FT	+/-	MINS	OREB	DREB	AST	DEFL	STL	BLK	TO	FOUL	CHG
#1 Mataya Messer	12	4/18	0/3	4/6	-41	28	1	3	2	6	3	2	5	3	0
#4 Eva Selensky	2	0/1	0/0	2/2	-36	27	1	1	1	1	0	0	0	2	0
#5 Mya Jones	5	2/3	0/0	1/2	-22	15	0	0	1	0	0	0	1	3	0
#10 Stella Gallik	0	0/1	0/0	0/0	0	1	0	0	0	0	0	0	0	0	0
#12 Rachel Schumacher	0	0/0	0/0	0/0	-15	8	0	0	0	1	0	0	1	0	0
#13 Unknown Athlete	0	0/1	0/1	0/0	0	1	0	1	0	0	0	0	0	0	0
#14 Gretchen Boll	2	1/1	0/0	0/0	0	1	0	0	0	0	0	0	0	0	0
#15 Natalie Benning	10	4/14	1/4	1/3	-43	33	1	3	0	0	1	0	2	0	0
#23 Abigail Schmidt	0	0/6	0/2	0/0	-19	21	2	2	1	0	1	0	1	2	0
#25 Journey Oukrop	2	0/6	0/1	2/4	-26	28	2	3	2	0	2	0	4	2	0
#31 Unknown Athlete	0	0/0	0/0	0/0	0	1	0	0	1	0	0	0	0	0	0
#32 Savannah Schweitzer	4	2/5	0/0	0/0	-18	11	2	0	0	3	1	0	1	2	0